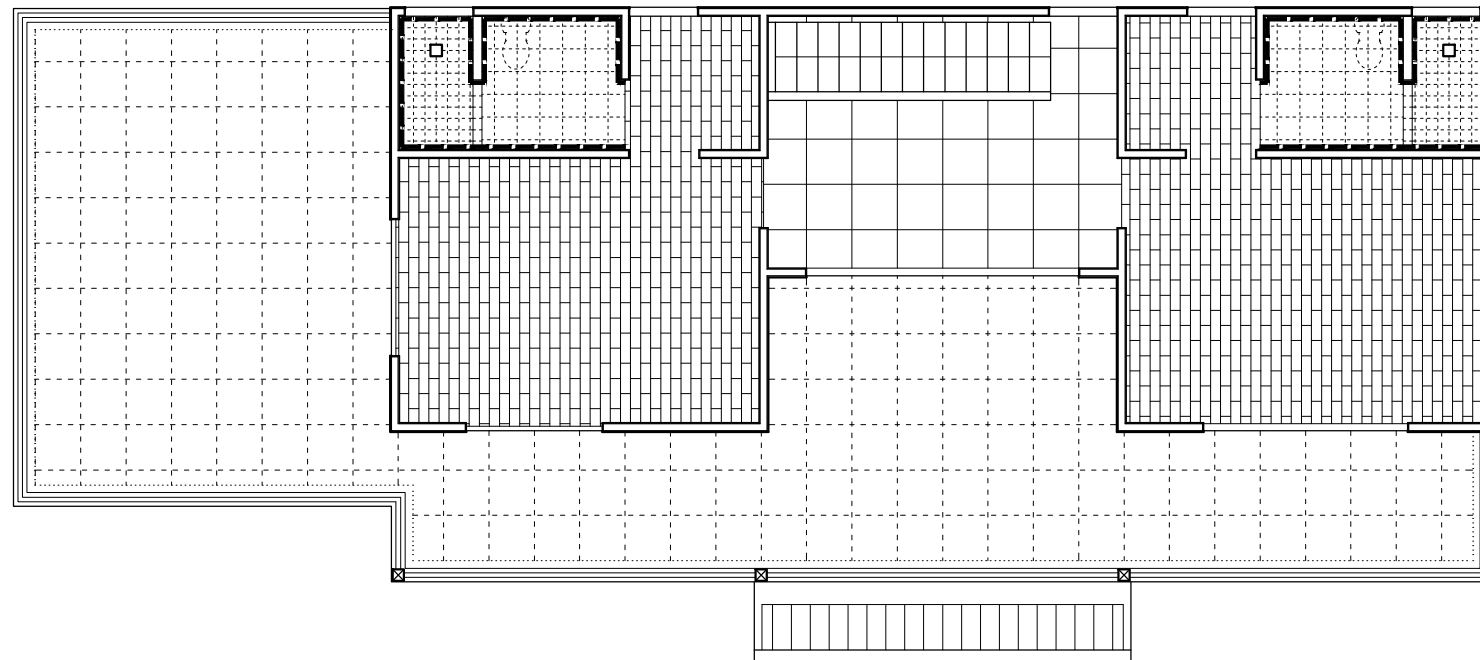
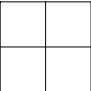
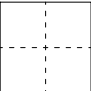
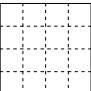
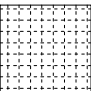
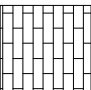
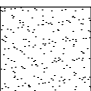
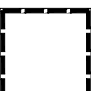




REPERAGE RDC



REPERAGE 1° ETAGE

- LEGENDE**
- 
 CARRELAGE 60x60 + PLINTHE CARREEE  
 (HALL, CUISINE, SEJOURS, RGT., ESC.)  
 > surface ≈ 61m<sup>2</sup>
  - 
 CARRELAGE 60x60 ANTI DERAPANT + PLINTHE CARREEE  
 (TERRASSES, DGT. EXT.)  
 > surface ≈ 96m<sup>2</sup>
  - 
 CARRELAGE 30x30 ANTI DERAPANT  
 (SDB hors douche, BUANDERIE, WC)  
 > surface ≈ 15m<sup>2</sup>
  - 
 CARRELAGE 15x15 ANTI DERAPANT  
 (Douches des SDB)  
 > surface ≈ 6m<sup>2</sup>
  - 
 PARQUET BOIS FLOTTANT + PLINTHE BOIS  
 (CHAMBRES, DRESSINGS)  
 > surface ≈ 60m<sup>2</sup>
  - 
 CHAPE BOUCHARDEE  
 (RAMPE GARAGE)  
 > surface ≈ 40m<sup>2</sup>
  - 
 FAIENCE MURALE 30x45, HT: 2,10m  
 (SDB)  
 > surface ≈ 65m<sup>2</sup>
  - 
 FAIENCE MURALE 30x45, HT: 1,00m  
 (WC)  
 > surface ≈ 2m<sup>2</sup>
  - 
 FAIENCE MURALE 30x45, HT: 0,30m  
 (AU DESSUS DU PLAN DE TRAVAIL DE LA CUISINE)  
 > surface ≈ 2m<sup>2</sup>

